

PREAMBLE

This BCS Athlete Sponsorship Properties document, as referred to in the Athlete Agreement, outlines the properties allocated by BCS to BCS Athletes for personal sponsorship logos.

NOTES:

- This document is not intended to restrict IBSF or BCS properties. Any placement of BCS or IBSF logos as well as the clothing, equipment or design may change from time to time.
- Athlete Properties may not be combined into larger properties.
- The scale and dimensions of the properties are indicated by the written area/dimensions (not the size of the white circle).
- The white circles indicate placement of properties, but these may not be exact and will depend on the dimensions and shape of each logo. Best efforts should be made to ensure the logos are spaced evenly, centred etc.
- It is the athlete's responsibility to ensure that he or she conforms with the limitations set out in this BCS Athlete Sponsorship Properties document.

WHAT TO WEAR WHEN & WHERE:

• During Competitions:

Top of the track:

- Speedsuit;
- Winter Jacket or Team Jacket;
- Winter Pant or Podium Pant; and
- Winter Toque
(optional – athlete supplied headwear with Karbon logo affixed (6.5cm W x 1cm H)).

Bottom of the track: (including leader's box)

- Speedsuit;
- Podium Jacket;
- Podium Pant or Winter Pant; and
- Podium Toque
(optional – athlete supplied headwear with Karbon logo affixed (6.5cm W x 1cm H)).

Awards & Medals Ceremonies:

- Podium Jacket;
- Podium Pant; and
- Podium Toque
(optional – athlete supplied headwear with Karbon logo affixed (6.5cm W x 1cm H)).

• Travel Days:

- Team Jacket.

• BCS activities or BCS arranged activities, including but not limited to on-ice training, official team events, media or sponsor appearances, promotional activities etc.:

- Winter Jacket, Podium Jacket or Team Jacket;
- Podium Pant or Winter Pant (weather depending, or pants with no visible branding); and
- Podium or Winter Toque
(optional – athlete supplied headwear with Karbon logo affixed (6.5cm W x 1cm H)).

COMPETITION WEAR WINTER OUTERWEAR

WINTER JACKET FRONT

HEAD x 1: 1247 mm²
max width: 43 mm
max height: 29 mm

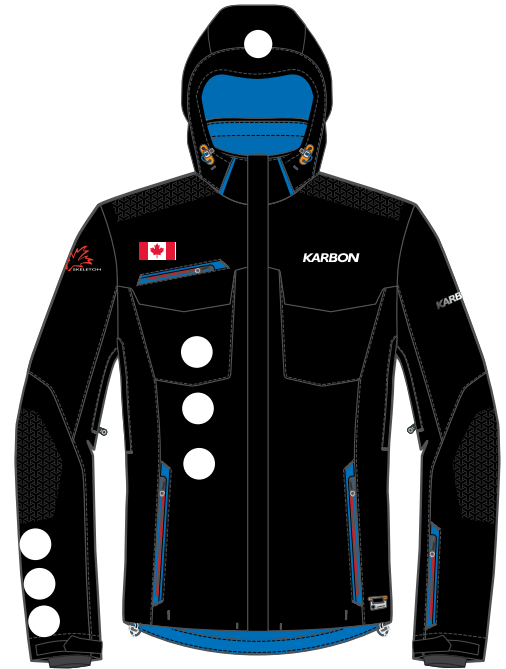
CHEST x 3: 2035 mm² each
max width: 80 mm
max height: 37 mm

ARM x 3: 2035 mm² each
max width: 80 mm
max height: 37 mm

COLOUR: **WHITE**



WINTER JACKET BACK



WINTER JACKET FRONT

WINTER JACKET BACK

BACK x 2: 8400 mm² each
max width: 210 mm
max height: 40 mm

COLOUR: **WHITE**

WINTER PANT BACK

CALF x 3: 4320 mm² each
max width: 80 mm
max height: 54 mm

COLOUR: **WHITE**

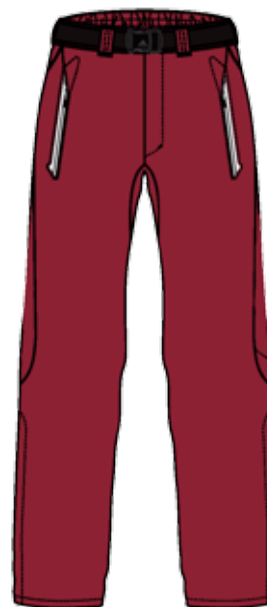


WINTER TOQUE

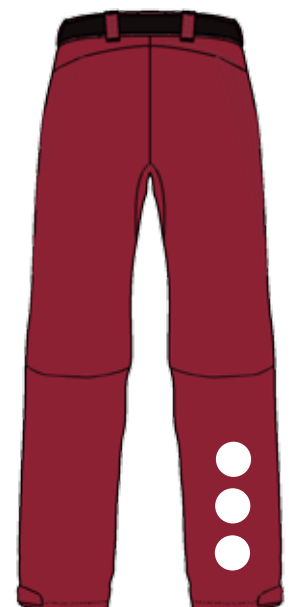
WINTER TOQUE

HEAD x 1: 1247 mm²
max width: 43 mm
max height: 29 mm

COLOUR: **WHITE**



WINTER PANT FRONT



WINTER PANT BACK

COMPETITION WEAR PODIUM OUTERWEAR

PODIUM JACKET FRONT

ARM x 3: 2035 mm² each
max width: 80 mm
max height: 37 mm

COLOUR: WHITE



PODIUM JACKET FRONT

PODIUM JACKET BACK

BACK x 2: 8400 mm² each
max width: 210 mm
max height: 40 mm

COLOUR: WHITE



PODIUM JACKET BACK

PODIUM PANT BACK

CALF x 3: 4320 mm² each
max width: 80 mm
max height: 54 mm

COLOUR: WHITE



PODIUM PANT FRONT

PODIUM PANT BACK

PODIUM TOQUE

HEAD x 1: 1247 mm²
max width: 43 mm
max height: 29 mm

COLOUR: WHITE



PODIUM TOQUE

COMPETITION WEAR TEAM OUTERWEAR

TEAM JACKET FRONT

CHEST x 3: 2035 mm² each

max width: 80 mm

max height: 37 mm

ARM x 3: 2035 mm² each

max width: 80 mm

max height: 37 mm

COLOUR: *WHITE*



TEAM JACKET FRONT

TEAM JACKET BACK

BACK x 2: 8400 mm² each

max width: 210 mm

max height: 40 mm

COLOUR: *WHITE*



TEAM JACKET BACK

COMPETITION WEAR SPEEDSUIT - BOBSLEIGH

SPEEDSUIT FRONT

RIGHT CHEST x 3:

- max area: 2035 mm² each
- max width: 80 mm each
- max height: 37 mm each

COLOUR: WHITE

SPEEDSUIT BACK

LEFT UPPER BACK x 1:

- max area: 2035 mm²
- max width: 80 mm
- max height: 37 mm

LEFT MIDDLE BACK x 1:

- max area: 2035 mm²
- max width: 80 mm
- max height: 37 mm

LEFT BOTTOM x 1:

- max area: 2035 mm²
- max width: 80 mm
- max height: 37 mm

LEFT CALF x 1:

- max area: 2035 mm²
- max width: 80 mm
- max height: 37 mm

COLOUR: WHITE



SPEEDSUIT FRONT

SPEEDSUIT BACK

COMPETITION WEAR SPEEDSUIT - SKELETON

SPEEDSUIT FRONT

RIGHT CHEST x 3:

- max area: 2035 mm² each
- max width: 80 mm each
- max height: 37 mm each

RIGHT THIGH x 2:

- max area: 2035 mm² each
- max width: 80 mm each
- max height: 37 mm each

RIGHT SHIN x 1:

- max area: 2035 mm²
- max width: 80 mm
- max height: 37 mm

COLOUR: WHITE

SPEEDSUIT BACK

LEFT BOTTOM x 1

- max area: 4320 mm²
- max width: 80 mm
- max height: 54 mm

LEFT CALF x 1:

- max area: 2035 mm²
- max width: 80 mm
- max height: 37 mm

COLOUR: WHITE



SPEEDSUIT FRONT

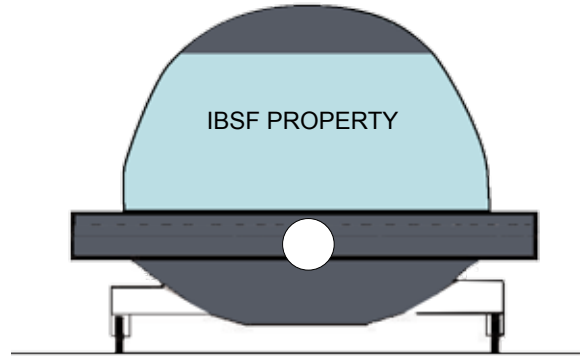
SPEEDSUIT BACK

COMPETITION EQUIPMENT BOBSLED

BOBSLED FRONT

NOSE x 1: 5600 mm²
max width: 112 mm
max height: 50 mm

COLOUR: *UNLIMITED*

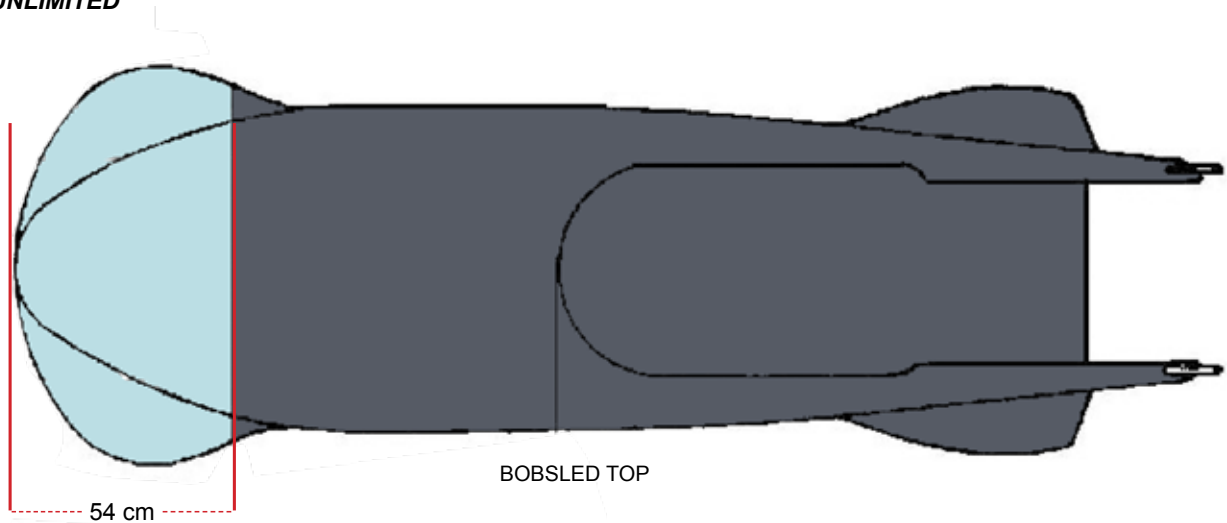


BOBSLED FRONT

BOBSLED SIDE (LEFT & RIGHT)

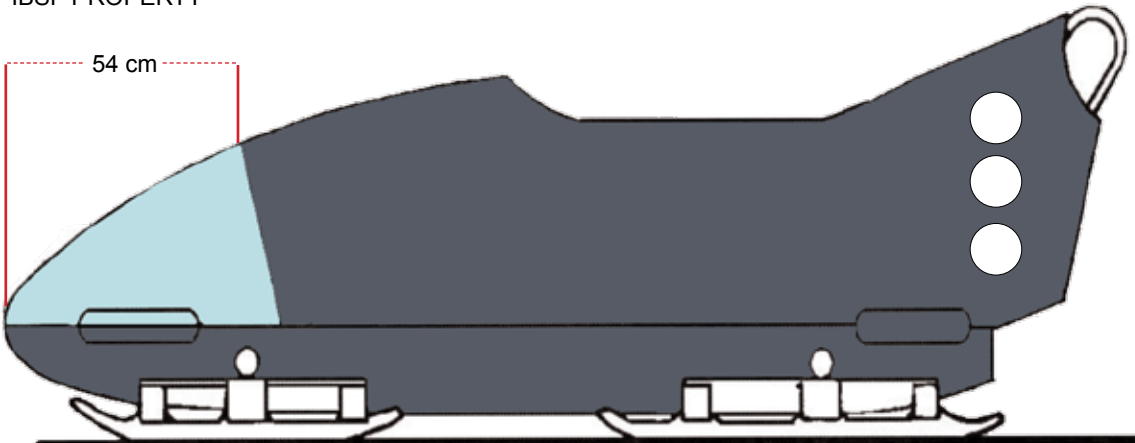
TAIL x 3: 46750 mm² each
max width: 275 mm each
max height: 170 mm each

COLOUR: *UNLIMITED*



BOBSLED TOP

IBSF PROPERTY



BOBSLED SIDES (LEFT & RIGHT)

COMPETITION EQUIPMENT SKELETON SLED

SKELETON SLED TOP SIDE

TOP x 2: 28900 mm² each
max width: 170 mm
max height: 170 mm

COLOUR: UNLIMITED

SKELETON SLED BOTTOM SIDE

BOTTOM x 1: 28900 mm²
max width: 170 mm
max height: 170 mm

COLOUR: UNLIMITED



SKELETON SLED BOTTOM SIDE



SKELETON SLED TOP SIDE

**COMPETITION EQUIPMENT
HELMET - BOBSLEIGH & SKELETON**

HELMET FRONT

CHIN x 1: 1247 mm²
max width: 43 mm
max height: 29 mm

COLOUR: BLACK OR WHITE

HELMET BACK

BACK x 1: 2035 mm²
max width: 80 mm
max height: 37 mm

COLOUR: BLACK OR WHITE



HELMET FRONT



HELMET BACK



HELMET SIDE